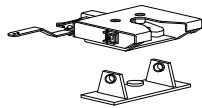


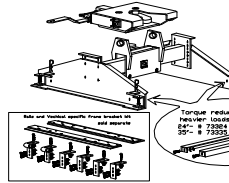
71401 / 71842 / 71844 / 72411 / 72412 / 72421 / 72422 / 72451 / 72452						
Weld-On, UBM, Crossbed & Dual Position 24"/35" Falcon Fifth Wheel Hitches						
FOR LIGHT COMMERCIAL USE						
Hitch application	Product Description	Rating		Parts Reference		
		G.T.W.	Vertical Load	Crossbar	H-Bracket	Sides
71401	Weld-On	32,000 lbs/14,545 kg	8,000 lbs/3,666 kg	73181	73941 - Weld-On Base	
71842	24" Ford UBM High Profile Double Tilt	20,000 lbs/9,091 kg	5,000 lbs/2,272 kg	73181	73963	73870 (Box incl. Sides, Bolt Pack and Anchors)
71844	35" Dodge UBM High Profile Double Tilt	20,000 lbs/9,091 kg	5,000 lbs/2,272 kg	73181	73964	73871 (Box incl. Sides, Bolt Pack and Anchors)
71321	24" XBed Low Profile Double Tilt	25,000 lbs/11,363 kg	6,250 lbs/2,840 kg	73181	73953	S3840 (Box incl. 2 x Sides, 1 x Bolt Pack)
71341	24" XBed High Profile Double Tilt	20,000 lbs/9,091 kg	5,000 lbs/2,272 kg	73181	73963	S3850 (Box incl. 2 x Sides, 1 x Bolt Pack)
72411	24" Dual Position Low Profile Standard	25,000 lbs/11,363 kg	6,250 lbs/2,840 kg	73181	73951	S3951 (Box incl. 2 x Sides, 1 x Bolt Pack)
72412	35" Dual Position Low Profile Standard	25,000 lbs/11,363 kg	6,250 lbs/2,840 kg	73181	73952	S3951 (Box incl. 2 x Sides, 1 x Bolt Pack)
72421	24" Dual Position Low Profile Double Tilt	25,000 lbs/11,363 kg	6,250 lbs/2,840 kg	73181	73953	S3951 (Box incl. 2 x Sides, 1 x Bolt Pack)
72422	35" Dual Position Low Profile Double Tilt	25,000 lbs/11,363 kg	6,250 lbs/2,840 kg	73181	73954	S3951 (Box incl. 2 x Sides, 1 x Bolt Pack)
72451	24" Dual Position High Profile Double Tilt	20,000 lbs/9,091 kg	5,000 lbs/2,272 kg	73181	73963	S3950 (Box incl. 2 x Sides, 1 x Bolt Pack)
72452	35" Dual Position High Profile Double Tilt	20,000 lbs/9,091 kg	5,000 lbs/2,272 kg	73181	73964	S3950 (Box incl. 2 x Sides, 1 x Bolt Pack)



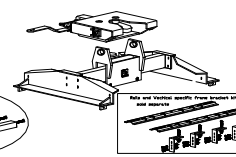
Weld On

WARNING!

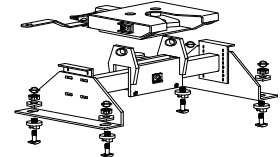
The base of the 32K WELD-ON model **MUST** be welded to a 3/8" plate of steel by a **certified welder**. Failure to comply will void all warranty!



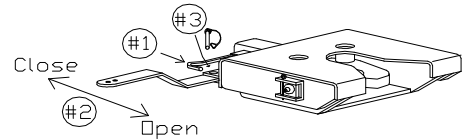
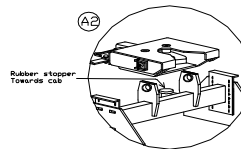
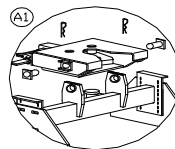
Dual Position



Cross Bed

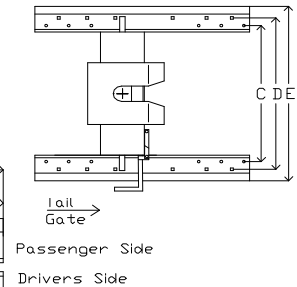
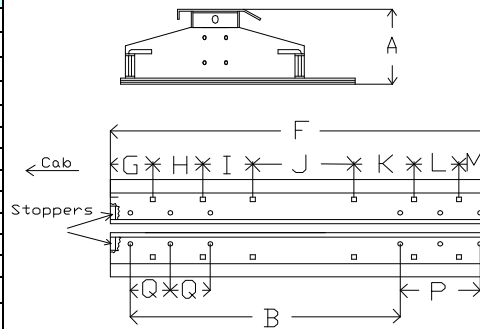


Under Bed



DSP Dual Position Fifth Wheel Hitches when assembled (General Information)

Information	Ref.	Low Profile	High Profile
Maximum height setting	A	12.5"	18.5"
2nd highest setting	A	n/a	17.5"
3rd highest setting	A	n/a	16.5"
Minimum height setting	A	12.5"	15.5"
Side bracket pin to pin (length)	B	27"	27"
Side bracket bolt pattern	-	3.5" x 4"	3.5" x 4"
Bed rail length	F	38"	38"
Bed rail pin separation (width)	C	24" FW = 27"	35" FW = 38"
Bed rail pin hole separation (front to back holes)	P-Q	P = 8" Q = 4"	
Bed rail carriage bolt hole separation (front to back holes)	G-M	4" 9" 14" 24" 29" 35"	1 2 3 4 5 6
Bed rail car. bolt separation (width)	D	24" FW = 31"	35" FW = 42"
Bed rail top to floor	-	1.25"	1.25"



Assembly of the Fifth Wheel Hitch - ALL MODELS EXCEPT FALCON WELD-ON

High Profile Models: Calculate the desired height of the fifth wheel hitch (see reference A). Important: There should be at least 5-1/2" clearance between the lowest point of the trailer and the top of the truck box to avoid damage to both truck and/or trailer.

High Profile & Low Profile Models: Assemble the h-bracket to the sides by using four (4) 1/2x1-1/2" Grade 5 bolts, lock washers and nuts per side. Tighten all fasteners to torque specification below.

Crossbar Assembly on all models: Remove hair pin clips and crossbar pivot pins from the sides of the crossbar (see A1). DO NOT remove the orange stoppers on the h-bracket as it is a crucial part of the hitch system (see A2). Carefully set crossbar onto h-bracket or weld-on base. Insert crossbar pivot pin on right and left side of crossbar and secure in place with hair pin clips.

For SLIDERS: Your fifth wheel hitch is now ready to slide into the DSP fifth wheel rail system. Lift all four (4) lock-out pins on the side brackets into the open position and place on rest. Slide into rails and drop lock-out pins into rails, securing the fifth wheel hitch into the desired position for coupling. Swivel lock-out pins under the rest and secure pins with supplied hair pin clips.

When moving hitch from one pin hole position on the bed rails to another (with trailer attached), lift all four (4) lock-out pins onto rests, move truck forward or backwards by 1" (depending on desired hole position change). Lower all four (4) pins and move truck into desired direction until pins pop into rail holes. Swivel pins under rest and secure in place with hair pin clips.

2. Coupling/Uncoupling - FOR ALL MODELS

2.1. To open the jaws: Remove quick pin (#3) from handle lock out and pull the 3/8" round bar s-shaped spring loaded handle (#1) to the left while pulling the large flat crossbar handle (#2) away from the cab towards the back of the truck. Note: the crossbar needs to be mounted on the weld-on base or the h-bracket/side assembly to be able to open to jaws. The trailer can now be hooked up. Note: the king pin will automatically trip the jaws to close around the king pin. READ IMPORTANT STEP 2.2.!!!

2.2. Locking jaws once trailer is engaged: Ensure the lock-out holes of the large flat crossbar handle are lined up for the quick pin to be secured in place. Should this not be the case, slightly pull out the 3/8" round bar s-shaped spring loaded handle to allow the internal locking mechanism plunger to move all the way back. You will hear a loud clanging. The quick pin can now be secured in place. **DO NOT TOW THE TRAILER WITHOUT THE JAWS SECURELY LOCKED AND THE LOCK-OUT QUICK PIN SECURELY IN PLACE!**

2.3. Closing the jaws when not towing: It requires a lot of force by the king pin to trip the automatic closing of the jaws, therefore, the Falcon crossbar can be stored with open jaws.

3. Maintenance & Important Information - FOR ALL MODELS

Never take apart the 3/8" round bar s-shaped spring loaded handle assembly as this will void warranty!

Check all fasteners before every use. Prevent rust by regular cleaning and/or painting of parts.

IMPORTANT! DO NOT GREASE THE FALCON FIFTH WHEEL HITCH! Grease may trap dirt and may seize the jaws or locking plunger. The DSP Falcon is designed to be used with a 3/16" thick Teflon Slip Disk, also called a hitch lube disk, AND NOT GREASE! Excessive wear from direct contact between the king pin and the crossbar due to no lubrication is considered misuse!

For internal lubrication, use graphite spray ONLY! No other type of grease is recommended and will void the warranty if applied.

Contents of Bolt Pack #73859		Replacement Parts List		Tools Required
8	Hex Bolt 1/2 x 1-1/4, Grade 5, UNC, PLated	73181/JRPK	Jaw Pin Replacement Pack (2 x Jaw Pins, 2 x Cotter Pins)	1/2" Wrench and Socket & 100 FT Torque Wrench
8	Lock Washer 1/2, Grade 5, UNC, Plated	73181/JRPK	Jaw Replacement Pack (Jaw Set (DS + PS), 1 x Spring)	
8	Hex Nut 1/2, Grade 5, UNC, Plated	73181/MPRPK	Mount Pin Replacement Pack (2 x Mount Pins, 2 x Clips #9)	
4	Hair Pin Clip #9 (Class III) 5/32"x3-5/16"	73307	Side Pin/Spring/Retainer Ring Replacement Set (1)	
Bolt Size	Grade 5 Torque	Metric		Grade 8.8 Torque
9/16	110 Ft. Lb.	8 mm		18 Ft. Lb.
7/16	54 Ft. Lb.	10 mm		36 Ft. Lb.
1/2	72 Ft. Lb.	12 mm		75 Ft. Lb.
5/8	150 Ft. Lb.	14 mm		103 Ft. Lb.
3/4	245 Ft. Lb.			

Maximum torque for weld or weld nuts is 38 FT/Lb

Warning: Check Fasteners annually or before usage, if the hitch is damaged replacement may be necessary. Do Not exceed hitch manufacturers hitch ratings listed above. DO NOT drill or alter this product. This product is only intended for the application listed above, see vehicle owner's manual for maximum towing capacity (GVWR). This product is intended for usage with the correct towing accessories and not to be used with tow ropes, cables, chains or any type of stretch or elastic rope.

DSP Hitches are manufactured by 2114391 AB Ltd., Edmonton Alberta, Canada. For more information on DSP and DSP products call 1-800-265-3377 or visit us at www.dsphitches.com