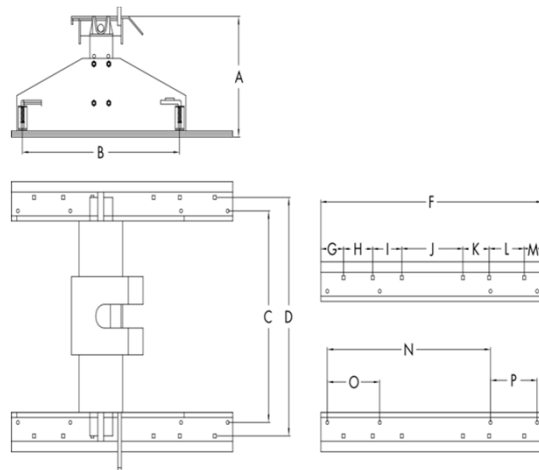
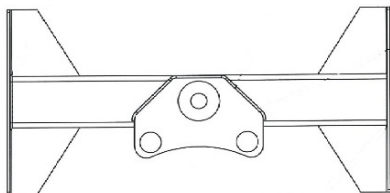


Hitch application	Rating	Notes
30K Sliding Gooseneck Hitch	30,000 lbs	73024 will fit into all DSP 24" rail set-ups. 73035 will fit into all DSP 35" rail set-ups.

Note : For best result for the installation of the gooseneck hitches, use or refer to the measurements below. Some applications may require the use of 5/16" bed rail rib spacer # 73551. In the reference guide below a fifth wheel hitch is pictured however all measurements refer to DSP Gooseneck hitches.

DSP Dual Position Gooseneck Trailer Hitches when assembled (General Information)

Information	Reference	Measurement
Dist. of truck bed to top of hitchball	A	7.5"
Side bracket pin to pin (length)	B	27"
Bed rail length	F	38"
Bed rail pin separation (width)	C	24" Model 27.5" 35" Model 38.5"
Bed rail carriage bolt hole sep. (front to back holes)	G-M	4" 9" 14" 24" 29" 35" 1 2 3 4 5 6
Bed rail car. bolt separation (width)	D	24" Model 31.5" 35" Model 42"
Bed rail top to floor	-	1.25"
Bed rail car. bolt diameter	-	0.5"



Parts List	Contents of Bolt Pack # 73859	Tools Required
1 GN Crossbar 730CB24 OR 730CB35	8 Hex Bolt Hex Bolt 1/2 x 1 1/4, Grade 5, UNC, Plated	1/2 & 1-3/8" Wrench and Socket
1 GN Mounting Hardware 730GS	8 Lock Washer 1/2" Plated	100 FT Torque Wrench
2 GN Side Bracket	8 Hex Nut 1/2, Gr.5, UNC, Plated	
1 GN HB 2-5/16" 30K	4 Hair Pin Clips	
1 Bolt Pack 73859		
1 Instructions 70000 Series		
	Shipping Weights	
	730CB24 55.3 lbs 730CB35 66.5 lbs 730GS 39.5 lbs	

1. Remove all packaging.
2. Place gooseneck side bracket against one side of the gooseneck crossbar. Line up holes and secure with 1/2 x 1-1/4" hex bolts (4 per side, middle hole for drainage only), 1/2" lock washer and 1/2" hex nut. Hand tighten. Repeat on other side.
3. Tighten all mounting fasteners to the correct torque specifications listed below.
4. Remove lock washer and hex nut from hitchball and install on gooseneck crossbar. Torque to clamp load: 4550 FT.LB.
5. Swivel all four (4) side pins out and place on top of sides.
6. Slide gooseneck hitch into DSP dual position bed rails.
7. To lock gooseneck hitch into place, swivel all four (4) side pins off the top of the sides. Slide gooseneck hitch back or forth to let the spring loaded side bracket pins drop into bed rail holes in desired position. Secure side pins by swivelling under tab and lock into place with provided hair pin clips.

Maintenance: Check and tighten all fasteners on a regular basis.

To remove gooseneck hitch from truck: remove hair pin clip from side bracket pin. Swivel side bracket pin out from under the tab, pull up and swivel pin so it rests on top of sides. Lock pin in place with hair pin clip. Repeat for all 4 side bracket pins. Gooseneck hitch can now be removed by sliding it out of bed rails.

Important: For DSP dual position bed rail installation instructions, please refer to vehicle specific installation instructions.

Bolt Size	Grade 5 Torque	Metric	Grade 8.8 Torque
9/16	110 Ft. Lb	8 mm	18 Ft. Lb.
7/16	54 Ft. Lb	10 mm	36 Ft. Lb.
1/2	72 Ft. Lb.	12 mm	75 Ft. Lb.
5/8	150 Ft. Lb	14 mm	103 Ft. Lb.
3/4	245 Ft. Lb	Maximum torque for weld or weld nuts is 38 FT/Lb	

Warning: Check Fasteners annually or before usage, if the hitch is damaged replacement may be necessary

Do Not exceed hitch manufactures hitch ratings listed above, DO NOT drill or alter this product. This product is only intended for the application listed above, see vehicle owner's manual for maximum towing capacity (GVWR). This product is intended for usage with the correct towing accessories and not to be used with tow ropes, cables, chains or any type of stretch or elastic rope.

DSP Hitches are manufactured by 2114391 Alberta Ltd., Edmonton Alberta, Canada
For more information on DSP and DSP products call 1-800-265-3377 or visit us at www.dsphitches.com