

**Ford Super Duty Long Box
Front Mount Camper Tiedown**

For specific fit, see current fit list in our catalogue at www.dsphitches.com

Diagram 1

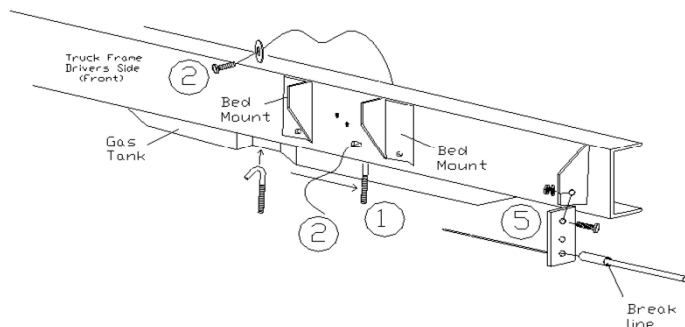
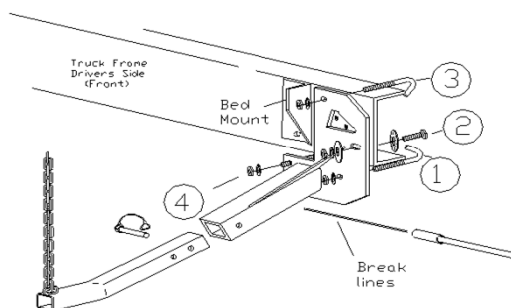


Diagram 2



Parts List		Contents of Bolt Pack # 61158/B		Tools Required
1	Mainbody Part# 61158/MBP	6	J BOLT Black	11/16" Socket or Wrench 100 FT/LB Torque Wrench
1	Mainbody Part # 61158/MBD	1	Bolt Leader 24"	
2	CT ANGLED TUBE CHAIN 17"	3	Hex Bolts 1/2 X 2, UNC, Grade 5, Plated	No Drill Application
1	Bolt Pack 61158/B	9	Hex Nut 1/2", UNC, Grade 5, Plated	
1	Instructions T61000 Series	7	Lock Washer 1/2", UNC, Grade 5, Plated	
		4	Conical Washer 1/2 Style 8 STL Zinc	
		2	Quick Pins	
Shipping Weight	35 lbs 16 kg	1	61158 Support Bracket DS 3Hole (Holes:1/2")	

Drivers side: remove bolt that hold the gas tank cover to the frame. DO NOT remove cover, let hang!

Hole 1) Locate the gap in the in the frame, insert and slide J-Bolt below oval hole #2. Leave J-Bolt hanging for later use.

Hole 2) Using the bolt leader, fish wire conical washer and 1/2"x2" hex bolt through the top of the frame. Do not remove bolt leader from bolt. Lift the main body into place and line up with the bolt in hole 2. Carefully remove the bolt leader and place 1/2" conical washer and 1/2" nut onto bolt, loosely fasten.

Hole 1) Line up tiedown, insert J-Bolt into mainbody and loosely fasten with 1/2" lockwasher and 1/2" nut.

Holes 3 & 4) Line up the mainbody and insert the J-Bolts through holes and mainbody. Loosely fasten with 1/2" lockwasher and 1/2" nut. J-Bolt for Hole 4 is located in the gap of the gas tank. Tighten all fasteners according to chart below.

Hole 5) Disengage e-break during installation, disconnect break line, mount the supplied 3 hole support bracket to the original factory brake line bracket using 1/2"x2" hex bolt, 1/2" lockwasher and 1/2" nut. Reattach the break line through the low holes in the newly installed support bracket.

Passenger Side: This side does not have the gas tank and will be easier to install. There may be some electrical wires that may need to be moved for installation and resecured when done. **NOTE:** Start with hole 2 to hold the mainbody in place.

Hole 2) Locate the oval hole between the bed mount brackets, using bolt leader, fish wire 1/2" conical washer and 1/2"x2" hex bolt into hole 2. (Bolt leader may not be required on all models)

Holes 1, 3 & 4) Attach a J-Bolt onto the frame, fasten with 1/2" lockwasher and 1/2" nut.

Reinstall and relocate any electric wires if necessary. Fasten all fasteners on both sides to the torque specifications below.

WARNING: When tightening J-Bolt a torque wrench must be use, damage to the J-Bolt due to over tightening with power tools will void the warranty of the J-Bolts!

Bolt Size	Grade 5 Torque	Metric	Grade 8.8 Torque
3/8	30 Ft. Lb	8 mm	18 Ft. Lb.
7/16	54 Ft. Lb	10 mm	36 Ft. Lb.
1/2	72 Ft. Lb.	12 mm	75 Ft. Lb.
5/8	150 Ft. Lb	14 mm	103 Ft. Lb.
3/4	245 Ft. Lb	Maximum torque for weld or weld nuts is 38 FT/Lb	

Warning: Check Fasteners annually or before usage, if the Tiedown is damaged replacement may be necessary.

DO NOT drill or alter this product. This product is only intended for the application listed above, see vehicle owner's manual for maximum camper capacity (GVWR). This product is intended for usage with the correct towing accessories and not to be used with tow ropes, cables, chains or any type of stretch or elastic rope.

DSP Hitches are manufactured by 2114391 Alberta Ltd., Edmonton, Alberta, Canada

For more information on DSP and DSP products call 1-800-265-3377 or visit us at www.dsphitches.com