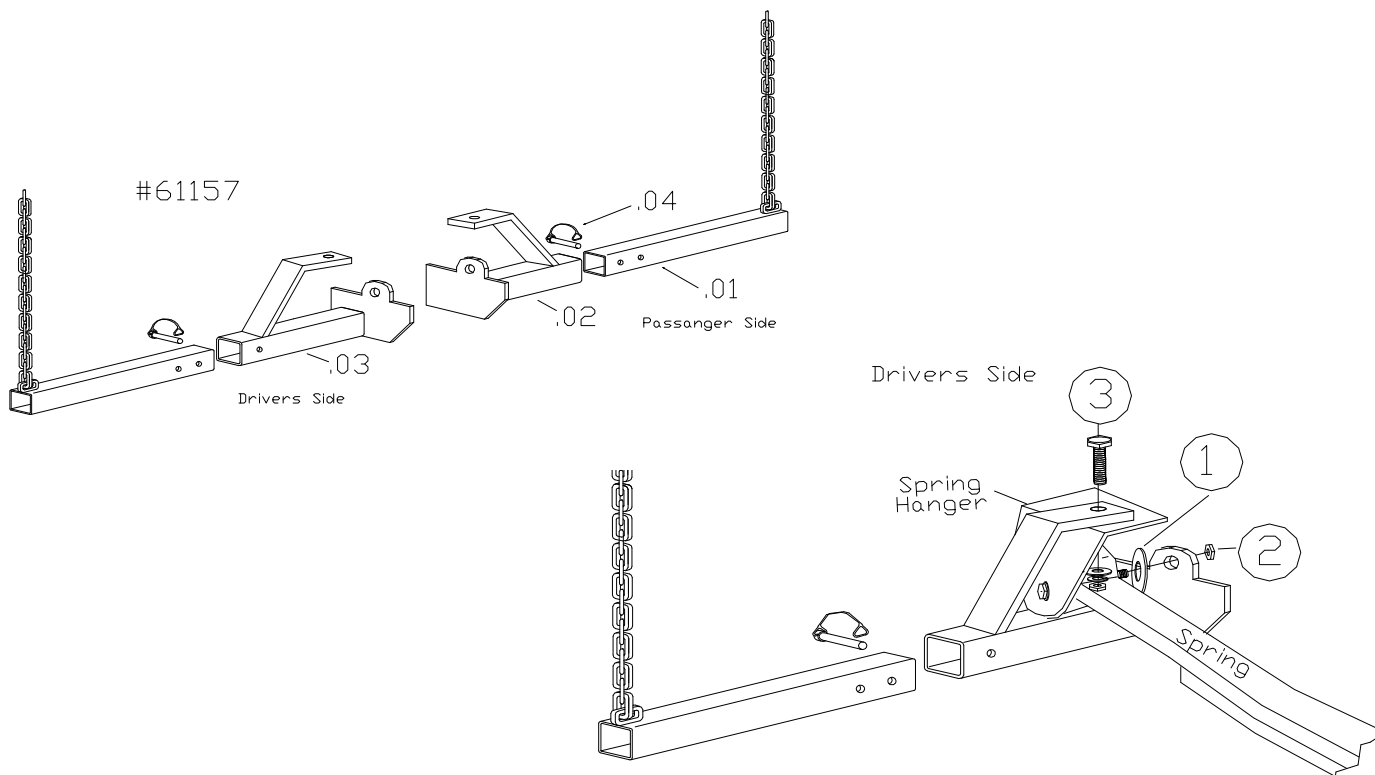


FORD Super Duty Short Bed Only

For specific fit, see current fit list
in our catalogue at www.dsphitches.com



Parts List		Contents of Bolt Pack # 61157/B		Tools Required
1	Mainbody Part# 61157/MBP	2	Flat Washer 3/4", Plated	11/16" Socket or Wrench 100 FT/LB Torque Wrench
1	Mainbody Part# 61157/MBD	2	Flat Washer 1/2", UNC, Grade 5, Plated	
2	Tube Chain 17" # 63102	2	Hex Bolts 1/2 X 1-1/2, UNC, Grade 5, Plated	No Drill Application
1	Bolt Pack 61157/B	2	Hex Nut 1/2", UNC, Grade 5, Plated	
1	Instructions T61000 Series	2	Lock Washer 1/2", UNC, Grade 5, Plated	
		2	Locknut M20 x 2.5	
		2	Quick Pins	
Shipping Weight	34 lbs 16 kg			

1) Place 3/4" flat washer to the inside of the front suspension hanger as a spacer. Lift and twist the mainbody tiedown into place so the "I" shaped support bracket rests on the spring hanger.

2) Loosely place the supplied M20 x 2.5 (lock nut or nut and washer) on to the spring bolt.

3) Bolt the support bracket in place onto the spring hanger with 1/2 x 1-1/2 hex bolt, attach the 1/2 flatwasher, lock washer and nut into place.

4) Repeat on passenger side, tighten all fasteners:

1/2 bolt: 80 ft/lbs

M20 x 2.5 hex nut: 100-120 ft/lbs

Bolt Size	Grade 5 Torque	Metric	Grade 8.8 Torque
3/8	30 Ft. Lb	8 mm	18 Ft. Lb.
7/16	54 Ft. Lb	10 mm	36 Ft. Lb.
1/2	72 Ft. Lb.	12 mm	75 Ft. Lb.
5/8	150 Ft. Lb	14 mm	103 Ft. Lb.
3/4	245 Ft. Lb	Maximum torque for weld or weld nuts is 38 FT/Lb	

Warning: Check Fasteners annually or before usage, if the Tiedown is damaged replacement may be necessary.

DO NOT drill or alter this product. This product is only intended for the application listed above, see vehicle owner's manual for maximum camper capacity (GVWR). This product is intended for usage with the correct towing accessories and not to be used with tow ropes, cables, chains or any type of stretch or elastic rope.

DSP Hitches are manufactured by 2114391 Alberta Ltd., Edmonton, Alberta, Canada

For more information on DSP and DSP products call 1-800-265-3377 or visit us at www.dsphitches.com