

IMPORTANT: The bracket/hole placement is a suggestion. Frames vary! Always check the frame prior to drilling if this is the best location for the brackets. If the suggested holes are not ideal, move to the next closest hole.

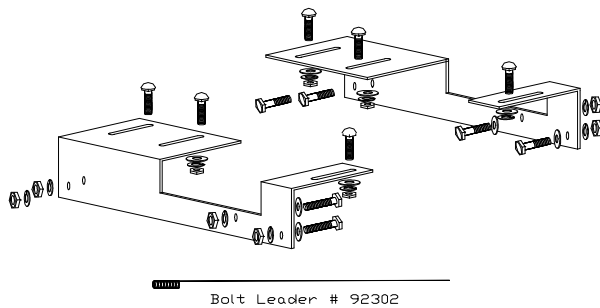
Hitch application	Notes	Years
Ford F-Series - NO Drill App	150 ONLY (tube frame)	04-cur

Measurement end of rail to end of box			Frame Bracket placement by hole number (see drawing below)
Comp. box 6.2'	Short box 6.5'	Long box 8'	
see notes	20.5" ²	20.5" ²	FD613/FP613 - 2, 3 & 5

NOTE #1: Can be installed on compact box. Must be used with 10" King Pin extension or with the Reese Sidewinder use the RBW Wedge.

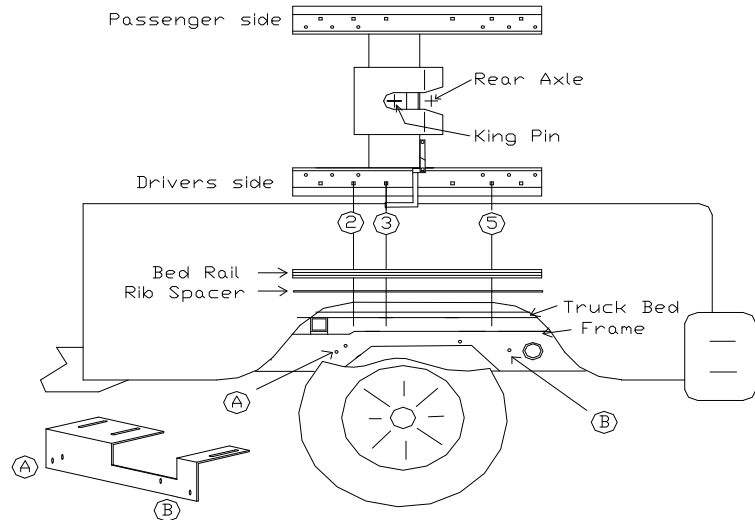
NOTE #2: Place center of king pin 1"-2" ahead of the axle when in travel position (closest to cab).

#73717



Bolt Leader # 92302

Rib Spacer not included
No Liner & With Liner
Use 5/16" # 73551P



NOTE Some models may require drilling or notching in the frame.**

*** At any point during installation, ensure that once placement is made, there are NO lines or wires interfering prior to drilling.**

Parts List		Contents of Bolt Pack # 73717/B	Tools Required
1	FD613 Frame Bracket	6 Carriage Bolt 1/2x3 FThread, Gr5, UNC, Plated	3/4" Wrench and Socket
1	FP613 Frame Bracket	6 Flat Washer 1/2, Plated	100 FT Torque Wrench
1	Bolt Pack # 73717/B	8 Hex Bolt 1/2-13 x 1 1/2, Grade 5, UNC, Plated	Drill and 1/2" Drill Bit
1	Instructions 70000 Series	14 Hex Nut 1/2, Grade 5, UNC, Plated	
		14 Lock Washer 1/2, Grade 5, UNC, Plated	
		1 Bolt Leader 48"	
		8 SPACER #91222	
Shipping weight:	30.8 lbs 14 kg		

IMPORTANT: 2011-UP MODELS: FORWARD HOLE 2 MAY BE MISSING OR UP TO 2" OUT.

Bed Rail Placement: 1) Follow the general installation guidelines for the assembly of the upper half of hitch system of your choice that is included with the system. The rails have a closed end and an open end (to slide the hitch in and out). Place closed end near cab. Slide the hitch into rails and lock in travel position (closest to end of the rail near cab). Place system with rails in the truck box and use measurements above as a guideline. Center hitch in between wheel wells. This installation recommends the use of a set of two (2) bed rail rib spacers #73551P. Rib spacers keep the rail level during installation and usage of the hitch. Place rib spacers between box and rails. **Note:** For best results for the installation of gooseneck hitches, install or use a fifth wheel hitch as a template or refer to the measurements under general "Gooseneck Hitch" installation guidelines.

Bed Rail Mounting: 2) Centre the rails in the bed of the truck box with the measurements listed on the information chart above for long, short or compact boxes. From side to side using the rails as a template, "drill holes 2, 3 & 5 through the floor of the truck bed then drop the 1/2" x 3" carriage bolts into the holes.

Frame Bracket Placement and Mounting 3) Place the supplied brackets upon the bolts that were installed in the box in step 2. Note some brackets may be placed easier than others depending on their locations (refer to parts listed for bracket placement). Loosely install lock washer, flat washer and hex nut on the carriage bolts to hold frame brackets in place.

4) Once brackets are installed, fish the 1/2" x 1 1/2" hex bolts with #91224 reinforcement spacer into the correct holes. Make sure there are no lines or wires interfering during install. Place 1/2" lock washer and 1/2" hex nut on bolts that were fished into the holes in the frame rails.

5) Tighten all mounting fasteners to correct torque specifications below.

NOTE: In case drilling or notching of the truck frame is required: Once brackets are installed in the order they fit best, tighten all brackets to the box using the supplied fasteners. Once they are tightened, "drill holes using the bracket as a template. Make sure there are no lines or wires interfering during "drilling. After "drilling is complete install the 1/2"x1-1/2" Hex Bolts to secure the brackets to the frame rails. Tighten all mounting fasteners to the correct torque specifications listed below.

Bolt Size	Grade 5 Torque	Metric	Grade 8.8 Torque
9/16	110 Ft. Lb	8 mm	18 Ft. Lb.
7/16	54 Ft. Lb	10 mm	36 Ft. Lb.
1/2	72 Ft. Lb.	12 mm	75 Ft. Lb.
5/8	150 Ft. Lb	14 mm	103 Ft. Lb.
3/4	245 Ft. Lb	Maximum torque for weld or weld nuts is 38 FT/Lb	

Warning: Check Fasteners annually or before usage, if the hitch is damaged replacement may be necessary

Do Not exceed hitch manufactures hitch ratings listed above, DO NOT drill or alter this product. This product is only intended for the application listed above, see vehicle owner's manual for maximum towing capacity (GVWR). This product is intended for usage with the correct towing accessories and not to be used with tow ropes, cables, chains or any type of stretch or elastic rope.

DSP Hitches are manufactured by 2114391 Alberta Ltd. Edmonton Alberta, Canada

For more information on DSP Hitches call 1-800-265-3377 or visit us at www.dsphitches.com