

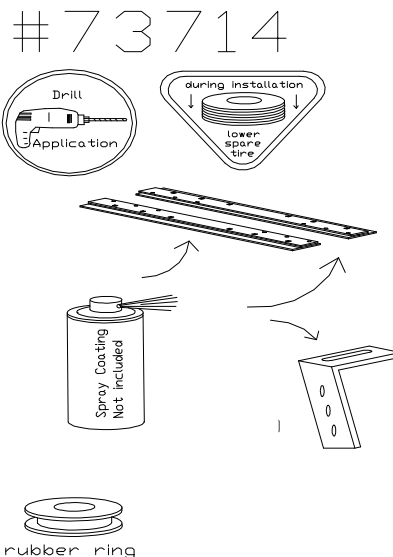
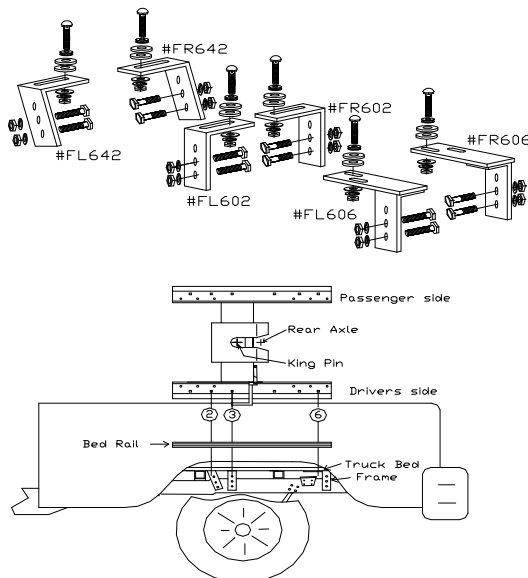
IMPORTANT: The bracket/hole placement is a suggestion. Frames vary! Always check the frame prior to drilling if this is the best location for the brackets. If the suggested holes are not ideal, move to the next closest hole.

Hitch application	Notes	Years
Ford F-Series - Drill App	F250/F350 ALUMINUM BODY ONLY	2017-up

Measurement end of rail to end of box			Frame Bracket placement by hole number (see drawing below)
Comp. box 6.2'	Short box 6.5'	Long box 8'	
see note 1	21.25" ²	21.25" ²	FL/FR642 - 2, FL/FR602 - 3, FL/FR606 - 6

NOTE #1: Can be installed on compact box. Must be used with 10" King Pin extension or with the Reese Sidewinder use the RBW Wedge.

NOTE #2: Place center of king pin 1"-2" ahead of the axle when in travel position (closest to cab).



NOTE: This installation requires an ANTI-CORROSION SPRAY COATING - Not included!
Please refer to FORD Q-222 SVE Bulleting on reverse.

IMPORTANT: Anti-Corrosion Spray Coating needs to be applied to the bottom of the rails and the top of the frame brackets prior to installation!

*** At any point during installation, ensure that once placement is made, there are NO lines or wires interfering prior to drilling.**

Parts List		Contents of Bolt Pack # 73722/B		Tools Required	
1	FL642 Frame Bracket	6	Carriage Bolt 1/2 x 3, Grade 5, UNC, Plated	3/4" Wrench and Socket 100 FT Torque Wrench Drill and 9/16" and 3/4" Drill Bit	
1	FR642 Frame Bracket	6	Flat Washer 1/2, Plated		
1	FL602 Frame Bracket	12	Hex Bolt 1/2 x 1 1/2, Grade 5, UNC, Plated		
1	FR602 Frame Bracket	18	Lock Washer 1/2", Grade 5, Plated		
1	FL6026 Frame Bracket	18	Hex Nut 1/2, Grade 5, UNC, Plated		
1	FR606 Frame Bracket	6	Rubber Ring		
1	Bolt Pack 73722/B	1	48" Bolt Leader		
Shipping weight:	19.1 lbs 8.7 kg				

May require lowering of Spare Tire before starting installation!

Bed Rail Placement: 1) Follow the general installation guidelines for the assembly of the upper half of hitch system of your choice that is included with the system. The rails have a closed end and an open end (to slide the hitch in and out). Place closed end near cab. Slide the hitch into rails and lock in travel position (closest to end of the rail near cab). Place system with rails in the truck box and use measurements above as a guideline. Center hitch in between wheel wells. **Note:** For best results for the installation of gooseneck hitches, install or use a fifth wheel hitch as a template or refer to the measurements under general "Gooseneck Hitch" installation guidelines.

Bed Rail Mounting: 2) Spray the bottom of the rails as well as the top of the frame brackets with Anti- Corrosion Spray Coating.

Centre the rails in the bed of the truck box with the measurements listed on the information chart above for long, short or compact boxes. From side to side using the rails as a template, *drill holes 2, 3 & 6 through the floor of the truck bed using a 3/4" drill bit. Place the rubber ring on 1/2" x 3" carriage bolts to act as an insulator between the steel bolts and aluminum sheet metal truck box and drop into drilled holes.

Frame Bracket Placement and Mounting 3) Working underneath the truck bed, place the supplied brackets upon the bolts that were installed in the box in step 2. Note: some brackets may be placed easier than others depending on their locations (refer to parts listed for bracket placement). Loosely install flat washer, lock washer and hex nut on the 1/2" x 3" carriage bolts to hold frame brackets in place.

4) Line up brackets to the frame and use the frame bracket as a template to drill 9/16" holes into the frame (2 per bracket). NOTE: ONLY drill through ONE wall of the frame! Using the supplied bolt leader, fish the 1/2" x 1-1/2" bolts into the correct holes. Make sure there are no lines or wires interfering during install. Place 1/2" lock washer and 1/2" hex nut on bolts that were fished into the holes in the frame. Tighten all mounting fasteners to the correct torque specifications listed below. Re-install spare tire.

Bolt Size	Grade 5 Torque	Metric	Grade 8.8 Torque
9/16	110 Ft. Lb	8 mm	18 Ft. Lb.
7/16	54 Ft. Lb	10 mm	36 Ft. Lb.
1/2	72 Ft. Lb.	12 mm	75 Ft. Lb.
5/8	150 Ft. Lb	14 mm	103 Ft. Lb.
3/4	245 Ft. Lb	Maximum torque for weld or weld nuts is 38 FT/Lb	

Warning: Check Fasteners annually or before usage, if the hitch is damaged replacement may be necessary

Do Not exceed hitch manufactures hitch ratings listed above, DO NOT drill or alter this product. This product is only intended for the application listed above, see vehicle owner's manual for maximum towing capacity (GVWR). This product is intended for usage with the correct towing accessories and not to be used with tow ropes, cables, chains or any type of stretch or elastic rope.

DSP Hitches are manufactured by 2114391 Alberta Ltd. Edmonton Alberta, Canada

For more information on DSP Hitches call 1-800-265-3377 or visit us at www.dsphitches.com